

TAKIYA



What is an Art Hanging System?

An art hanging system allows you to move and adjust the level of artwork freely without damaging your walls. Systems include a rail that is mounted to the wall or ceiling, track hooks and hanging sets.

Why use Takiya Art Hanging Systems?

- Designed in Japan with safety as the highest priority
- Tough enough to withstand the load from lightweight to heavyweight display
- Simple design blends in easily with a wide range of aesthetics
- Durable for long-term use



How to choose an Art Hanging System:

- **Weight:** Consider the weight of the artwork you plan on hanging.
- **Location:** Determine how and where you want to mount the track.
- **Aesthetic:** Think about the overall style of your institution.



TAKIYA Traditional Art Hanging System

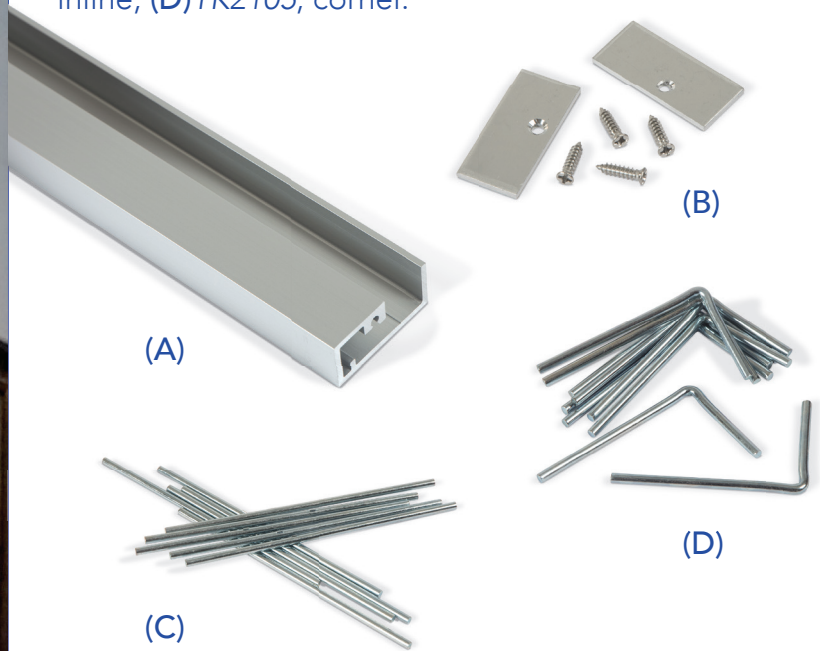
- Traditional, open-faced track style
- Accommodates up to 154 lbs. of hanging objects
- Simple, brushed aluminum finish
- Wall-mount
- Stability protects from theft and damage from disasters, such as earthquakes

Insert hook sideways to fit into the track, once inside the track twist hook



RAIL:

(A)TK2100, Track 78 ¾"L. Use Track Endcaps (B)TK2102 to close a length of track. Connect multiple lengths of track using Joiners (C)TK2104, inline; (D)TK2105, corner.



TRACK HOOKS:

(E)TK2124 Traditional J-Hook for lightweight applications (up to 44 lbs.).



(F)TK2125 for medium and heavyweight applications (up to 154 lbs.).



(G)TK2129 Traditional Low Profile Track Hook for medium and heavyweight applications (up to 154 lbs.).

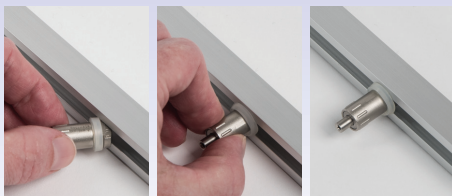




TAKIYA Discreet Art Hanging System

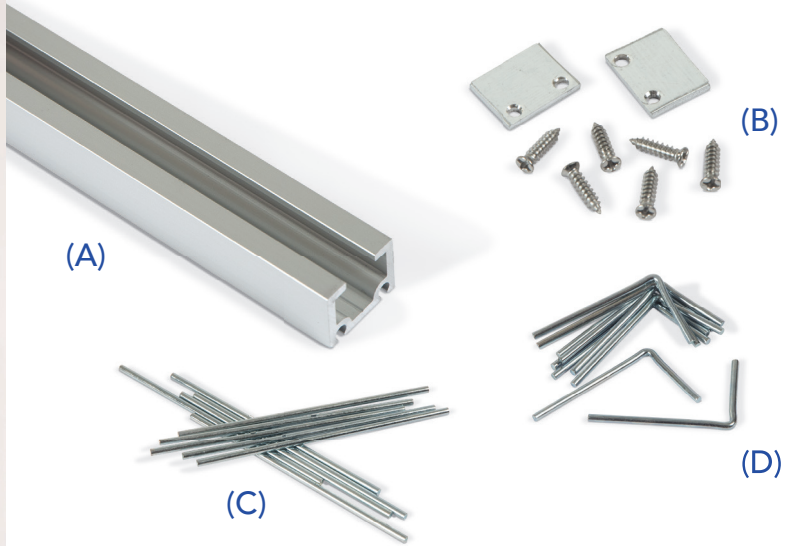
- Sleek and versatile track style preserves the looks of surrounding architecture
- Accommodates up to 66 lbs. of hanging objects
- Simple, brushed aluminum finish
- Wall or ceiling mount
- Stability protects from theft and damage from disasters, such as earthquakes

Ceiling Mount



RAIL:

(A)TK2101, Track 78 ¾"L, 66 lb. weight limit.
Use Track Endcaps (B)TK2103 to close a length of track. Connect multiple lengths of track using Joiners (C)TK2104, inline; (D)TK2105, corner.



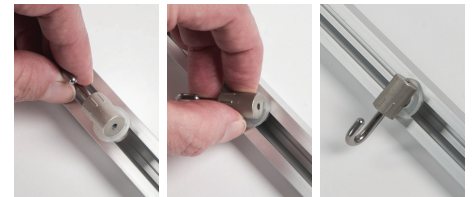
TRACK HOOKS:

For Wall-Mount

(E)TK2131 Discreet J-Hook for medium-weight applications (up to 66 lbs.). (F)TK2133 Discreet Low Profile Track Hook for lightweight applications (up to 44 lbs.).



Wall Mount



For Ceiling-Mount

(G)TK2130 Discreet J-Hook for medium-weight applications (up to 66 lbs.). (H)TK2132 Discreet Low Profile Track Hook for lightweight applications (up to 44 lbs.).



Cable & Art Hook Hanging Sets

When selecting hanging sets, you want to consider:

Type of track hook – There are two styles of cable based on the end of the wire, which corresponds with the track hook type.

- J-Hook style track hooks use hanging sets with a grommet end on the cable. The grommet end slips onto the track hook.
- Low-Profile One-Touch style hooks use hanging sets with a soldered end on the cable. The soldered end is inserted directly in the base of the track hook. A ball-bearing mechanism inside the track hook locks the cable in place. Cable thickness (thin, medium, or heavy-duty) will determine the specific track hook compatibility.



J-Hook



Low-Profile One-Touch

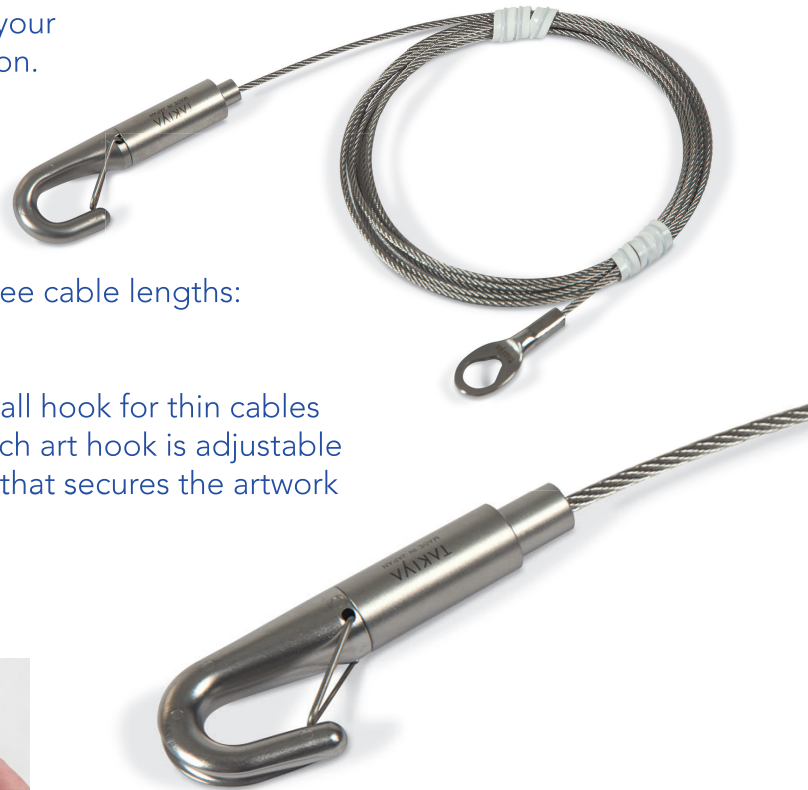
Weight of object – Cable thickness will correspond to your weight requirements, as well as your track hook selection.

Cables are available in three thicknesses.

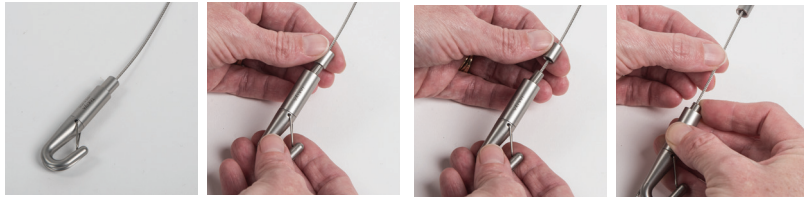
- Thin Cable (up to 44 lbs.)
- Medium Cable (up to 66 lbs.)
- Heavy-Duty Cable (up to 154 lbs.)

Length of cable - Each hanging set is available with three cable lengths: 59", 78¾" and 98".

Art Hooks – Each hanging set includes an art hook (small hook for thin cables and large hook for medium and heavy-duty cables). Each art hook is adjustable along the cable and has a security spring-loaded latch that secures the artwork to the hook.



Adjusting the Cable



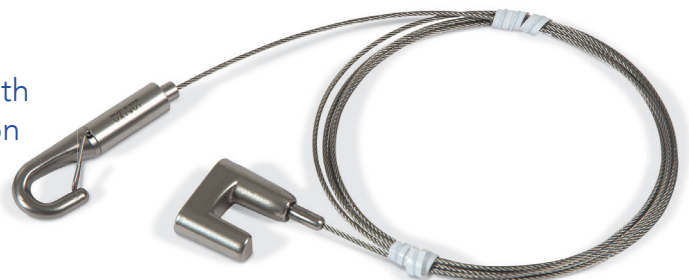
Loosen cap of art hook then press down on top portion to adjust the hook's location on the cable

Keeping it Simple

Use the Traditional wall-track and keep it even simpler with the All-in-One Track Hook, Cable & Art Hook combination for lightweight items.

Available in three cable lengths: 59", 78 ¾" and 98".

[TK2126, TK2127, TK2128]



<https://info.gaylord.com/takiya-art-hanging-systems>